

AgroPilot

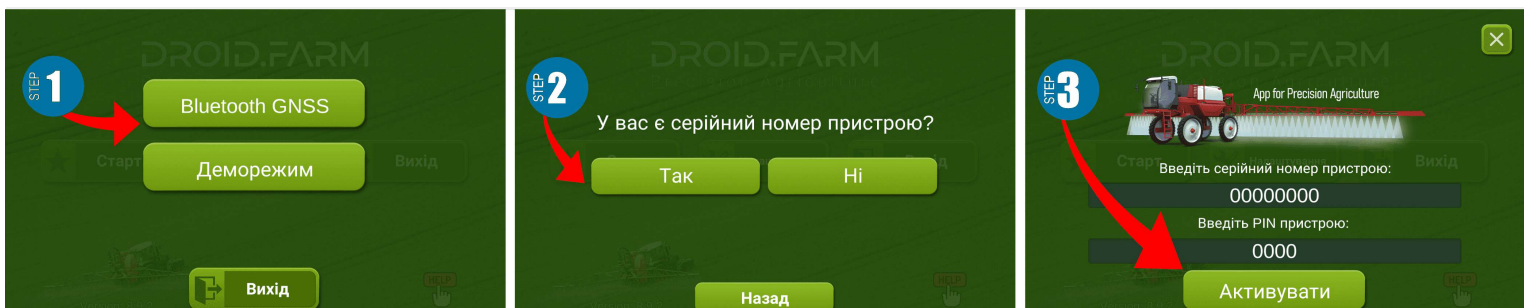
<https://AgroPilot.App>, info@AgroPilot.App

GNSS receiver «AgroPilot BT30»

- 1) — Mount the GNSS receiver at the center of the vehicle's roof.
- 2) — Supply power to the receiver from your vehicle's 12V network.



To work with our equipment, download the "AgroPilot" software for Android devices using this link: <https://AgroPilot.App/Instruction>. Install and launch the app, enable Bluetooth and internet, then enter the 8-digit serial number and the PIN code (found on the serial label). Minimum device requirements: Android 5.0, 1 GB RAM. Recommended specifications: 4 GB RAM, 8-core processor.



A detailed user guide for the software is available on the official website: <https://AgroPilot.App/Instruction>.



GNSS

GPS + IMU

Interface:	Bluetooth 2.0 та TTL/RS-232	Bluetooth 2.0 та TTL/RS-232
Positioning Rate:	10 Hz	10 Hz
Pass-to-Pass Accuracy¹:	+/- 12-18 in / 30-45 cm	+/- 12-18 in / 30-45 cm
Speed Accuracy:	0.05 m/s	0.05 m/s
Automation Support:	Yes	Yes
Receiver Type:	72-channel GPS/QZSS L1 C/A, GLONASS L10F, BeiDou B11, Galileo E1B/C SBAS L1 C/A: WAAS, EGNOS, MSAS, GAGAN	72-channel GPS L1 C/A, Galileo E1B/C SBAS L1 C/A: WAAS, EGNOS
Operating Frequencies:	1575.42-1602MHz	1575.42±3MHz
Model:	AgroPilot BT30	AgroPilot BT30-IMU
Standalone Accuracy:	2.5 m CEP	2 m CEP
GNSS Chipset:	UBX-M8030-Kx-DR series	UBX-M8030-Kx-DR series
Accuracy with SBAS:	1.5 m CEP	1 m CEP
Inertial Navigation:	—	LSM6DSR
Receiver Sensitivity:	44-46 dBm	44-46 dBm
RS-232 Data Rate:	115200 bps	115200 bps
Operating Temperature, °C:	-40 ... +80	-40 ... +80
Power Supply Voltage:	12/24V DC	12/24V DC
Mounting Method:	Magnet	Magnet
Typical Application:	Navigation	Navigation
Cable Length:	5 m (+/- 10 cm)	5 m (+/- 10 cm)
Diameter:	152x67.9 mm	152x67.9 mm
Polarization:	Circular RHCP	Circular RHCP
Product Code:	8517 69 90 00	8517 69 90 00
Product Description:	GNSS guidance system, brand AgroPilot, model BT30, designed for civilian use as part of positioning systems, portable single-frequency L1 receiver in a sealed, durable casing.	GPS guidance system, brand AgroPilot, model BT30-IMU, designed for civilian use as part of positioning systems, portable single-frequency L1 receiver in a sealed, durable casing.
Warranty Period:	2 years	2 years

¹Pass-to-Pass Accuracy is a term used to describe farmers' requirements for precision. It is defined as the accuracy achievable within a 15-minute window—the approximate time needed to complete a pass in a typical field. Instructions on how to verify this accuracy are provided in the video: "[ISO 12188-1— 2021](#)".